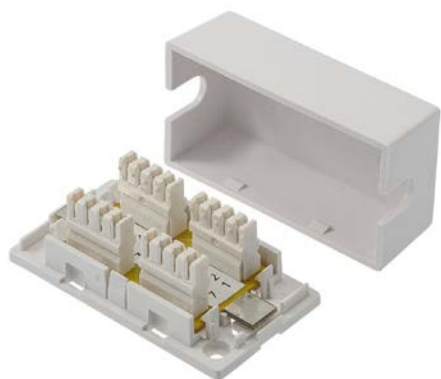


## Maxxam UTP Cable Joint Box



- ➔ Enables jointing of Cat 5e and Cat 6 UTP cables
- ➔ Minimal impact on link performance
- ➔ 110 punch down terminations
- ➔ Compact design

### Features:

- ➔ Joint box for Cat 5e and Cat 6 UTP cables
- ➔ 110 punch down terminations
- ➔ Designed to cause minimal impact on cabling performance
- ➔ Compact, surface mounting design
- ➔ Enables extending of cable runs without re-cabling
- ➔ Supplied complete with fixing screws, double sided adhesive pad and cable ties

### Technical Data:

|                   |                |
|-------------------|----------------|
| <b>Material</b>   | ABS            |
| <b>Colour</b>     | White          |
| <b>Dimensions</b> | 62 x 34 x 24mm |

### Ordering Information:

| Part No.  | Description                |
|-----------|----------------------------|
| XXUTPCJB1 | Maxxam UTP Cable Joint Box |

Maxxam offers a comprehensive range of high performance copper and fibre optic cabling solutions backed up with industry leading service and support.

Email: [sales@maxxam.co.uk](mailto:sales@maxxam.co.uk)

Telephone: 01276 405780