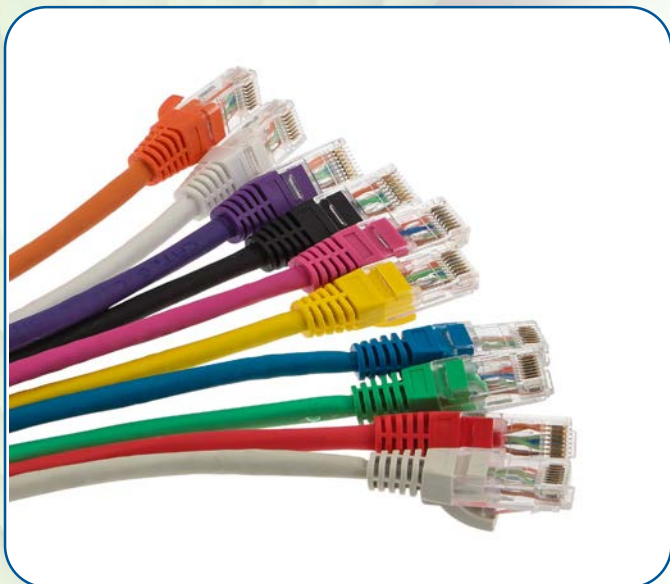


Maxxam Cat 6 U/UTP Patch Leads



- Cat 6 performance
- Standards compliant
- LSOH sheath
- Snagless plug latch

Features:

- Stranded cores for flexibility
- U/UTP cable construction
- Plugs fitted with protected latch to prevent snagging during removal of cords
- Narrow profile moulded boot
- Available in a range of colours
- Available in a range of lengths
- 568B wiring configurations



Product Overview:

The Maxxam Cat 6 U/UTP Patch Leads offer Cat 6 compliant performance and support high speed protocols up to 1G Ethernet. The Cat 6 U/UTP Patch Leads are backwards compatible to all preceding cabling categories, ensuring support of all IP applications designed to run over them.

The RJ45 plugs are fitted with a narrow profile moulded boot that provides strain relief and is compatible with modern high density switch ports. The plugs are fitted with a protected latch that prevents snagging when pulling cables out of wiring zones.

The Maxxam Cat 6 U/UTP Patch Leads can be used for patching between panels or for connection of equipment either in the Comms Room or at the Work Area Outlet and are available in a range of colours and lengths to suit all requirements.

Technical Data:

Standards Compliant	ANSI/TIA-568-C.2, ISO/IEC 11801, BS EN 50173
Cable Construction	U/UTP
Jacket Material	LSOH
Conductor	24 AWG Stranded Copper
Plug Housing	UL94V-2 Transparent Polycarbonate
Plug Contact Material	Phosphor Bronze with Nickel Plating
Plug Contact Finish	50µ Gold

Ordering Information:

Part Number **Description**
Refer to matrix below Maxxam Cat 6 U/UTP Patch Lead, (Length), (Colour)

LENGTH	GREY	RED	GREEN	BLUE	YELLOW
0.3m	XX61003C	XX62003C	XX63003C	XX64003C	XX65003C
0.5m	XX61005	XX62005	XX63005C	XX64005	XX65005C
1.0m	XX61010	XX62010	XX63010C	XX64010	XX65010C
1.5m	XX61015	XX62015	XX63015C	XX64015	XX65015C
2.0m	XX61020	XX62020	XX63020C	XX64020	XX65020C
3.0m	XX61030	XX62030	XX63030C	XX64030	XX65030C
5.0m	XX61050	XX62050	XX63050C	XX64050	XX65050C
10.0m	XX61100	XX62100	XX63100C	XX64100	XX65100C
15.0m	XX61150C	XX62150C	XX63150C	XX64150C	XX65150C
20.0m	XX61200C	XX62200C	XX63200C	XX64200C	XX65200C

LENGTH	BLACK	VIOLET	WHITE	ORANGE	PINK
0.3m	XX66003C	XX67003C	XX68003C	XX69003C	XX60003C
0.5m	XX66005C	XX67005C	XX68005C	XX69005C	XX60005C
1.0m	XX66010C	XX67010C	XX68010C	XX69010C	XX60010C
1.5m	XX66015C	XX67015C	XX68015C	XX69015C	XX60015C
2.0m	XX66020C	XX67020C	XX68020C	XX69020C	XX60020C
3.0m	XX66030C	XX67030C	XX68030C	XX69030C	XX60030C
5.0m	XX66050C	XX67050C	XX68050C	XX69050C	XX60050C
10.0m	XX66100C	XX67100C	XX68100C	XX69100C	XX60100C
15.0m	XX66150C	XX67150C	XX68150C	XX69150C	XX60150C
20.0m	XX66200C	XX67200C	XX68200C	XX69200C	XX60200C

Warranty:

The Maxxam 25 year Warranty guarantees Permanent Link and Channel performance to the relevant cabling standard when Maxxam cabling products are installed by a Maxxam Installer Partner. Performance to the relevant cabling standards ensures support of all applications designed to run over the cabling system.



Maxxam offers a comprehensive range of high performance copper and fibre optic cabling solutions backed up with industry leading service and support.

Email: sales@maxxam.co.uk

Telephone: 01276 405780