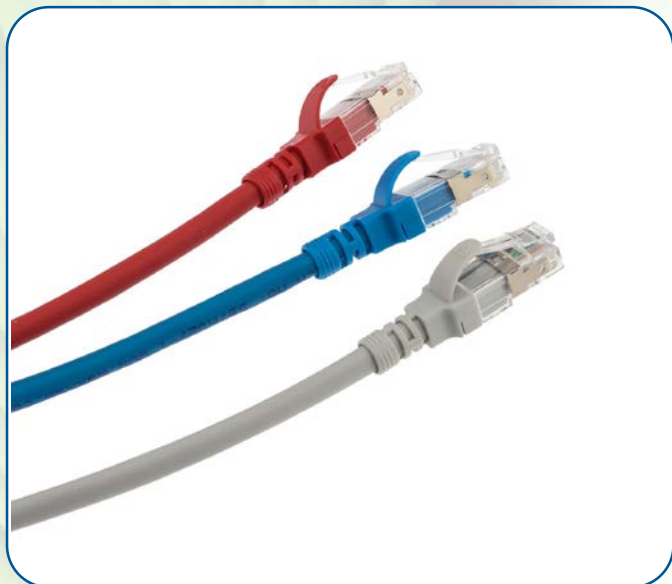


Maxxam Cat 6A S/FTP Patch Leads



- Cat 6A performance
- Standards compliant
- LSOH sheath
- Protected plug latch



Features:

- Stranded cores for flexibility
- S/FTP cable construction
- Plugs fitted with protected latch to prevent snagging during removal of cords
- Narrow profile moulded boot
- Available in a range of 10 different colours
- Available in a range of 7 different lengths
- 568B wiring configurations



Product Overview:

The Maxxam Cat 6A S/FTP Patch Leads offer Cat 6A compliant performance and support high speed protocols up to 10G Ethernet. The Cat 6A S/FTP Patch Leads are backwards compatible to all preceding cabling categories, ensuring support of all IP applications designed to run over them.

The RJ45 plugs are fitted with a narrow profile moulded boot that provides strain relief and is compatible with modern high density switch ports. The plugs are fitted with a protected latch that prevents snagging when pulling cables out of wiring zones.

The Maxxam Cat 6A S/FTP Patch Leads can be used for patching between panels or for connection of equipment either in the Comms Room or at the Work Area Outlet and are available in a range of colours and lengths to suit all requirements.

Technical Data:

| | |
|------------------------------|--|
| Standards Compliant | ANSI/TIA-568-C.2, ISO/IEC 11801, BS EN 50173 |
| Cable Construction | S/FTP |
| Jacket Material | LSOH |
| Conductor | 26 AWG Stranded Copper |
| Plug Housing | UL94V-2 Transparent Polycarbonate |
| Plug Contact Material | Phosphor Bronze with Nickel Plating |
| Plug Contact Finish | 50µ Gold |

Supported Applications:

- 10Base-T Ethernet
- 100BASE-TX Fast Ethernet
- 1000BASE-T Gigabit Ethernet
- 10GBase-T 10 Gigabit Ethernet
- Digital and Analogue Voice
- ISDN

Ordering Information:

Part Number **Description**
 Refer to matrix below Maxxam Cat 6A S/FTP Patch Lead, (Length), (Colour)

| LENGTH | GREY | RED | GREEN | BLUE | YELLOW |
|--------|-----------|-----------|-----------|-----------|-----------|
| 0.5m | XX6A1005S | XX6A2005S | XX6A3005S | XX6A4005S | XX6A5005S |
| 1.0m | XX6A1010S | XX6A2010S | XX6A3010S | XX6A4010S | XX6A5010S |
| 1.5m | XX6A1015S | XX6A2015S | XX6A3015S | XX6A4015S | XX6A5015S |
| 2.0m | XX6A1020S | XX6A2020S | XX6A3020S | XX6A4020S | XX6A5020S |
| 3.0m | XX6A1030S | XX6A2030S | XX6A3030S | XX6A4030S | XX6A5030S |
| 5.0m | XX6A1050S | XX6A2050S | XX6A3050S | XX6A4050S | XX6A5050S |
| 10.0m | XX6A1100S | XX6A2100S | XX6A3100S | XX6A4100S | XX6A5100S |

| LENGTH | BLACK | VIOLET | WHITE | ORANGE | PINK |
|--------|-----------|-----------|-----------|-----------|-----------|
| 0.5m | XX6A6005S | XX6A7005S | XX6A8005S | XX6A9005S | XX6A0005S |
| 1.0m | XX6A6010S | XX6A7010S | XX6A8010S | XX6A9010S | XX6A0010S |
| 2.0m | XX6A6015S | XX6A7015S | XX6A8015S | XX6A9015S | XX6A0015S |
| 3.0m | XX6A6020S | XX6A7020S | XX6A8020S | XX6A9020S | XX6A0020S |
| 5.0m | XX6A6030S | XX6A7030S | XX6A8030S | XX6A9030S | XX6A0030S |
| 10.0m | XX6A6050S | XX6A7050S | XX6A8050S | XX6A9050S | XX6A0050S |

Warranty:

The Maxxam 25 year Warranty guarantees Permanent Link and Channel performance to the relevant cabling standard when Maxxam cabling products are installed by a Maxxam Installer Partner. Performance to the relevant cabling standards ensures support of all applications designed to run over the cabling system.



Maxxam offers a comprehensive range of high performance copper and fibre optic cabling solutions backed up with industry leading service and support.

Email: sales@maxxam.co.uk

Telephone: 01276 405780

