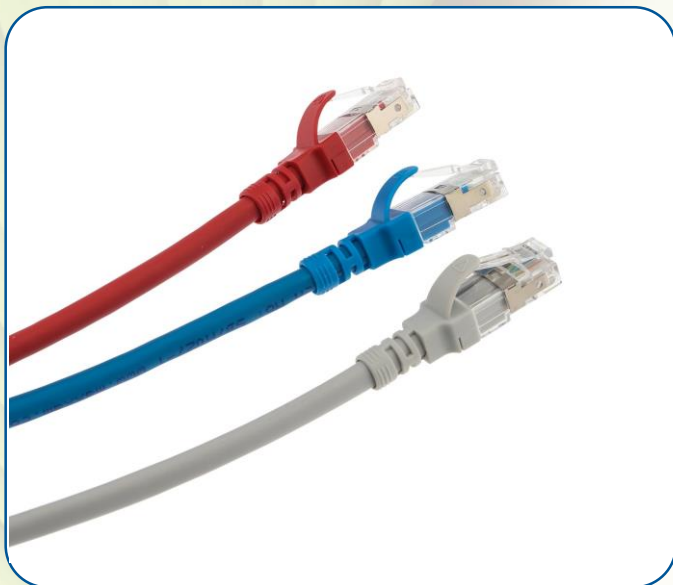


Maxxam Cat 6A Shielded Patch Leads



- Cat 6A performance
- Standards compliant
- LSOH sheath
- Snagless plug latch



Features:

- Stranded cores for flexibility
- U/FTP cable construction
- Plugs fitted with protected latch to prevent snagging during removal of cords
- Narrow profile moulded boot
- Available in a range of colours
- Available in a range of lengths
- 568B wiring configuration

Product Overview:

The Maxxam Cat 6A Shielded Patch Leads offer Cat 6A compliant performance and supports high speed protocols such as 10G Ethernet. Cat 6A Shielded Patch Leads are backwards compatible to all preceding cabling categories, ensuring support of all IP applications.

The U/FTP cable construction offers excellent shielding performance whilst minimising overall cable diameter and provides good flexibility and small bend radii.

The RJ45 plugs are fitted with a narrow profile moulded boot that provides strain relief and is compatible with modern high density switch ports. The plugs are fitted with a protected latch that prevents snagging when pulling cables out of wiring zones.

The Maxxam Cat 6A Shielded Patch Leads can be used for patching between panels or for connection of equipment either in the Comms Room or at the Work Area Outlet and are available in a range of colours and lengths to suit all requirements.

Technical Data:

Standards Compliant	ANSI/TIA-568-C.2, ISO/IEC 11801, BS EN 50173
Cable Construction	U/FTP
Jacket Material	LSOH
Conductor	26 AWG Stranded Copper
Plug Housing	UL94V-2 Transparent Polycarbonate
Plug Contact Material	Phosphor Bronze with Nickel Plating
Plug Contact Finish	50µ Gold
Shield Contact Material	Zinc Alloy with Nickel Plating

Supported Applications:

- ➔ 10Base-T Ethernet
- ➔ 100BASE-TX Fast Ethernet
- ➔ 1000BASE-T Gigabit Ethernet
- ➔ 10GBASE-T 10 Gigabit Ethernet
- ➔ Digital and Analogue Voice
- ➔ ISDN

Ordering Information:

Part Number Description

Refer to matrix below Maxxam Cat 6A Shielded Patch Lead, (Length), (Colour)

LENGTH	GREY	RED	GREEN	BLUE	YELLOW
0.5m	XX6A1005	XX6A2005	XX6A3005	XX6A4005	XX6A5005
1.0m	XX6A1010	XX6A2010	XX6A3010	XX6A4010	XX6A5010
1.5m	XX6A1015	XX6A2015	XX6A3015	XX6A4015	XX6A5015
2.0m	XX6A1020	XX6A2020	XX6A3020	XX6A4020	XX6A5020
3.0m	XX6A1030	XX6A2030	XX6A3030	XX6A4030	XX6A5030
5.0m	XX6A1050	XX6A2050	XX6A3050	XX6A4050	XX6A5050
7.0m	XX6A1070	XX6A2070	XX6A3070	XX6A4070	XX6A5070
10.0m	XX6X1100	XX6X2100	XX6X3100	XX6X4100	XX6X5100
15.0m	XX6A1150	XX6A2150	XX6A3150	XX6A4150	XX6A5150
20.0m	XX6A1200	XX6A2200	XX6A3200	XX6A4200	XX6A5200

Warranty:

The Maxxam 25 year Warranty guarantees Permanent Link and Channel performance to the relevant cabling standard when Maxxam cabling products are installed by a Maxxam Installer Partner. Performance to the relevant cabling standards ensures support of all applications designed to run over the cabling system.



Maxxam offers a comprehensive range of high performance copper and fibre optic cabling solutions backed up with industry leading service and support.

Email: sales@maxxam.co.uk

Telephone: 01276 405780