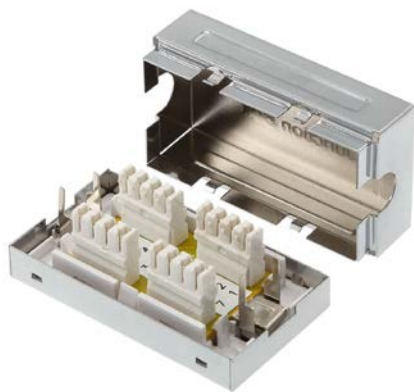


Maxxam Cat 6A Cable Joint Box



- ➔ Enables jointing of Cat 6A cables
- ➔ Minimal impact on link performance
- ➔ 110 punch down terminations
- ➔ Compact design

Features:

- ➔ Joint box for Cat 6A cables
- ➔ 110 punch down terminations
- ➔ Designed to cause minimal impact on cabling performance
- ➔ Compact, surface mounting design
- ➔ Enables extending of cable runs without re-cabling
- ➔ Supplied complete with fixing screws, double sided adhesive pad and cable ties

Technical Data:

Material	Chrome plated mild steel
Colour	Silver
Dimensions	63 x 35 x 24mm

Ordering Information:

Part No.	Description
XX6ACJB1	Maxxam Cat 6A Cable Joint Box

Maxxam offers a comprehensive range of high performance copper and fibre optic cabling solutions backed up with industry leading service and support.

Email: sales@maxxam.co.uk

Telephone: 01276 405780