

Maxxam Cat 6 UTP Easy Punch Patch Panel, 48 Ports, 1U

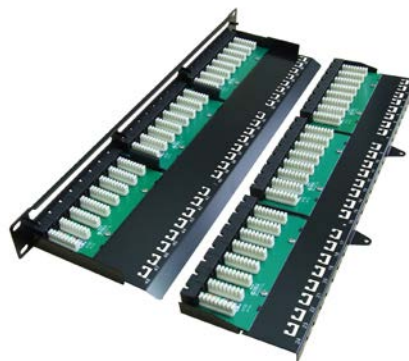


- High density
- Krone termination
- Horizontal PCB
- Integral cable management



Features:

- 48 Port, 1U Patch Panel
- Termination using Krone Tool
- Easy Punch design speeds installation
- Top layer easily removed to access lower layer
- Individually numbered ports
- Colour coded labels for 568A & 568B wiring configurations
- Integral cable management



Product Overview:

The Maxxam Cat 6 UTP 24 Port Easy Punch Patch Panel offers high density and Cat 6 compliant performance to support high speed protocols up to 1G Ethernet. The panel is backwards compatible to all preceding cabling categories, ensuring support of all IP applications designed to run over them.

The panel uses a 'double deck' design with the top deck easily removed through the undoing of just two knurled nuts. The horizontally mounted PCB provides easy termination using a Krone punch down tool and there are colour coded labels for both 568A and 568B wiring configurations.

The panel has individually numbered ports and is supplied with 19" fixing kit and cable ties.

Technical Data:

Standards Compliant	ANSI/TIA-568-C.2, ISO/IEC 11801, BS EN 50173
Height	1U (44mm)
Depth	145mm
Chassis	1.2mm Black powder coated mild steel
RJ45 Contacts	Nickel Plated Phosphor Bronze with 50µ Gold on plug contact area
IDC Body	UL94V-2 Plastic
IDC Contacts	Phosphor Bronze with Tin Plating
IDC Wire Gauge	22-26 AWG
RJ45 Life	Minimum 750 mating cycles
Retention Strength	7.7kg between jack and plug
Operating Temperature Range	-10 to +60°C
Dielectric Strength	1000V RMS at 60Hz for 1 minute
Insulation Resistance	500mΩ minimum
Contact Resistance	2mΩ per contact
PCB	FR4, UL 94-0

Supported Applications:

- 10Base-T Ethernet
- 100BASE-TX Fast Ethernet
- 1000BASE-T Gigabit Ethernet
- Digital and Analogue Voice
- ISDN

Ordering Information:

Part No.	Description
XX60031	Maxxam Cat 6 UTP Easy Punch Patch Panel, 48 Ports, 1U

Warranty:

The Maxxam 25 year Warranty guarantees Permanent Link and Channel performance to the relevant cabling standard when Maxxam cabling products are installed by a Maxxam Installer Partner. Performance to the relevant cabling standards ensures support of all applications designed to run over the cabling system.



Maxxam offers a comprehensive range of high performance copper and fibre optic cabling solutions backed up with industry leading service and support.

Email: sales@maxxam.co.uk

Telephone: 01276 405780

maxxam