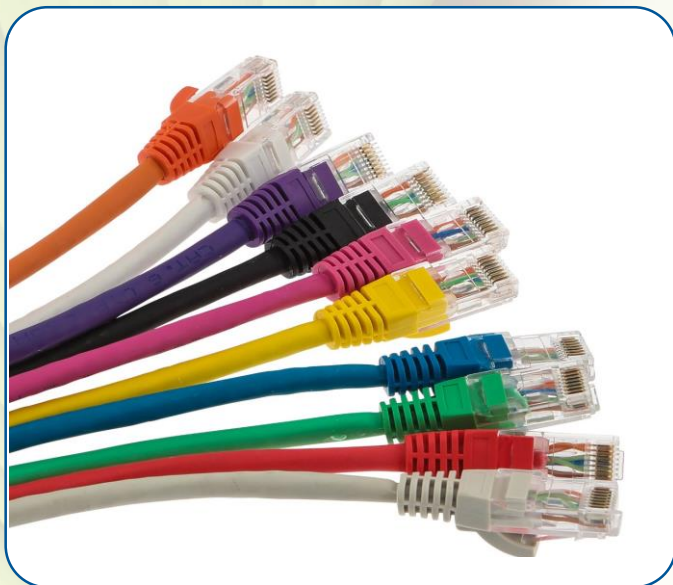


## Maxxam Cat 5e U/UTP Patch Leads



- Cat 5e performance
- Standards compliant
- LSOH sheath
- Snagless plug latch

### Features:

- Stranded cores for flexibility
- U/UTP cable construction
- Plugs fitted with protected latch to prevent snagging during removal of cords
- Narrow profile moulded boot
- Available in a range of colours
- Available in a range of lengths
- 568B wiring configurations

### Product Overview:

The Maxxam Cat 5e U/UTP Patch Leads offer Cat 5e compliant performance and support high speed protocols up to 1G Ethernet. The Cat 5e U/UTP Patch Leads are backwards compatible to all preceding cabling categories, ensuring support of all IP applications designed to run over them.

The RJ45 plugs are fitted with a narrow profile moulded boot that provides strain relief and is compatible with modern high density switch ports. The plugs are fitted with a protected latch that prevents snagging when pulling cables out of wiring zones.

The Maxxam Cat 5e U/UTP Patch Leads can be used for patching between panels or for connection of equipment either in the Comms Room or at the Work Area Outlet and are available in a range of colours and lengths to suit all requirements.

## Technical Data:

<b>Standards Compliant</b>	ANSI/TIA-568-C.2, ISO/IEC 11801, BS EN 50173
<b>Cable Construction</b>	U/UTP
<b>Jacket Material</b>	LSOH
<b>Conductor</b>	24 AWG Stranded Copper
<b>Plug Housing</b>	UL94V-2 Transparent Polycarbonate
<b>Plug Contact Material</b>	Phosphor Bronze with Nickel Plating
<b>Plug Contact Finish</b>	50µ Gold

## Supported Applications:

- 10Base-T Ethernet
- 100BASE-TX Fast Ethernet
- 1000BASE-T Gigabit Ethernet
- Digital and Analogue Voice
- ISDN

## Ordering Information:

### Part Number

### Description

Refer to matrix below Maxxam Cat 5e U/UTP Patch Lead, (Length), (Colour)

LENGTH	GREY	RED	GREEN	BLUE	YELLOW
0.5m	XX5E1005C	XX5E2005C	XX5E3005C	XX5E4005C	XX5E5005C
1.0m	XX5E1010C	XX5E2010C	XX5E3010C	XX5E4010C	XX5E5010C
2.0m	XX5E1020C	XX5E2020C	XX5E3020C	XX5E4020C	XX5E5020C
3.0m	XX5E1030C	XX5E2030C	XX5E3030C	XX5E4030C	XX5E5030C
5.0m	XX5E1050C	XX5E2050C	XX5E3050C	XX5E4050C	XX5E5050C
10.0m	XX5E1100C	XX5E2100C	XX5E3100C	XX5E4100C	XX5E5100C

LENGTH	PINK	BLACK	VIOLET	WHITE	ORANGE
0.5m	XX5E0005C	XX5E6005C	XX5E7005C	XX5E8005C	XX5E9005C
1.0m	XX5E0010C	XX5E6010C	XX5E7010C	XX5E8010C	XX5E9010C
2.0m	XX5E0020C	XX5E6020C	XX5E7020C	XX5E8020C	XX5E9020C
3.0m	XX5E0030C	XX5E6030C	XX5E7030C	XX5E8030C	XX5E9030C
5.0m	XX5E0050C	XX5E6050C	XX5E7050C	XX5E8050C	XX5E9050C
10.0m	XX5E0100C	XX5E6100C	XX5E7100C	XX5E8100C	XX5E9100C

## Warranty:

The Maxxam 25 year Warranty guarantees Permanent Link and Channel performance to the relevant cabling standard when Maxxam cabling products are installed by a Maxxam Installer Partner. Performance to the relevant cabling standards ensures support of all applications designed to run over the cabling system.



Maxxam offers a comprehensive range of high performance copper and fibre optic cabling solutions backed up with industry leading service and support.

Email: [sales@maxxam.co.uk](mailto:sales@maxxam.co.uk)

Telephone: 01276 405780