

UTP Patch Panel Termination Instructions

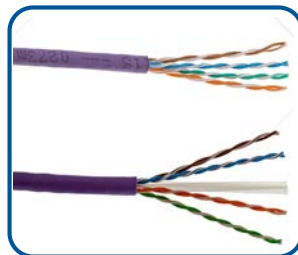
Maxxam Products:

XX60035 Cat 6 UTP Patch Panel, 24 Port, 1U

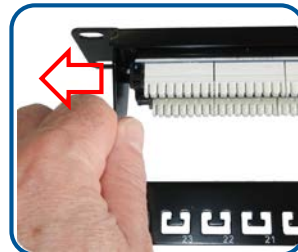
XX5E0030 Cat 5e UTP Patch Panel, 24 Ports, 1U



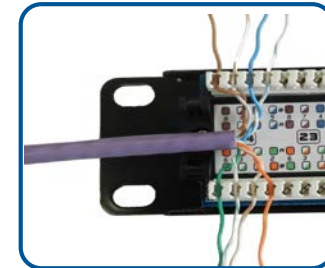
1. Remove approximately 50mm of the cable sheath and separate the 4 pairs.
For Cat 6 cables, carefully cut back the central plastic separator flush with the cable sheath.



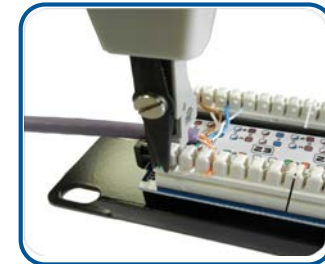
2. Remove the cable management bar by gently pulling the 'wings' outwards.



3. Dress the wires in to the appropriate coloured IDC slots following the preferred wiring configuration. Ensure that the cable pair twists are maintained as close as possible to the point of termination.



4. Punch down the wires using a Krone or 110 style termination tool.



5. When all of the cables have been terminated re-fit the cable management bar.



6. Secure the cables to the cable management bar using cable ties, taking care not to over tighten them.

