

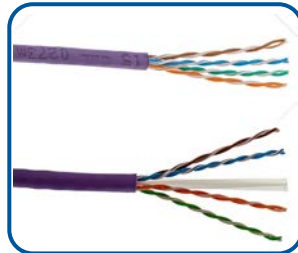
UTP Easy Punch Patch Panel Termination Instructions

Maxxam Products:

- XX60030** Cat 6 UTP Easy Punch Patch Panel, 24 Port, 1U
- XX60031** Cat 6 UTP Easy Punch Patch Panel, 48 Port, 1U
- XX5E0035** Cat 5e UTP Easy Punch Patch Panel, 24 Ports, 1U
- XX5E0036** Cat 5e UTP Easy Punch Patch Panel, 48 Ports, 1U



1. Remove approximately 50mm of the cable sheath and separate the 4 pairs.
For Cat 6 cables, carefully cut back the central plastic separator flush with the cable sheath.



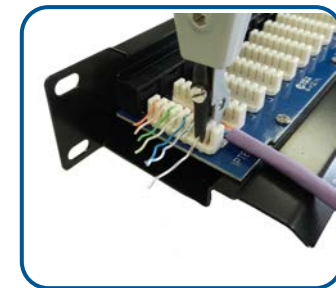
2. Place the cable so that the sheath end is close to the rear end of the IDC block.



3. Dress the wires in to the appropriate coloured IDC slots following the preferred wiring configuration. Ensure that the cable pair twists are maintained as close as possible to the point of termination.



4. Punch down the wires using a Krone style termination tool.



5. When all of the cables have been terminated secure them to the cable management tray using cable ties, taking care not to over tighten them.

