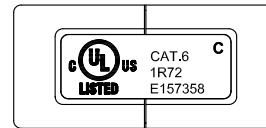
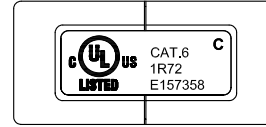
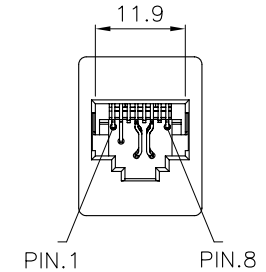
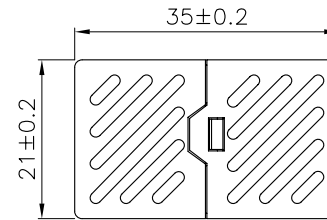
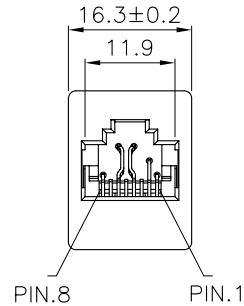


SCALE 1/1



Specification :

Material :

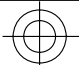
1. RJ45 Jack :
 - 1-1. Housing : ABS, UL 94V-0.
 - 1-2. RJ45 Jack Bracket Set : PC, UL 94V-2, Transparent color.
2. RJ45 Jack Contact :
 - 2-1. Material : Phosphor Bronze with Nickel plated.
 - 2-2. Finish : 50 micro-inch Gold plated on Plug contact area.
3. PCB : FR4, UL 94V-0.

Performance :

- a. Insertion force : 20N max.(IEC 60603-7-4)
- b. Retention strength : 7.7 kg between Jack and Plug.
- c. Operating temperature : -10°C to 60°C. (ISO/IEC 11801, ANSI/TIA/EIA 568 B.2)
- d. Life(mating cycles) : 750 cycles min. (ISO/IEC 11801, IEC 60603-7-4)
- e. The Cat.6 transmission performance is in compliance with the ANSI/TIA/EIA 568 B.2-1 standard.

Remark : AAEBB01011411XX

- (1) XX : Color
01=Black, 05=White

	DSGN	Wei	08.JUN.2010	ITEM NO: 22 2137
	CHK	kli	08.JUN.2010	
UNIT	M/M	APPR	Yty	CAT.6 UNSHIEDED IN-LINE COUPLER
SCALE	1/4			
DWG NO:	<p style="text-align: center;">Velocity</p>			
JE314/1				